



## MRS-134

- Feature**
- MRS-134 is the multi-channel MR sensor of the detection width 62mm.
  - Elements are arranged onto the same straight line to detect safety thread of the bill securely. It can get output steadily from the sensor by the width of 62mm.

### Absolute Maximum Rating (Ta=25C)

Item	Symbol	Standard Value	Unit
Excitation,Maximum	V <sub>a</sub> max	5.5	V
Withstand Voltage	V <sub>I</sub>	100	V
Allowable Loss	P <sub>D</sub>	170	mW
Operation Environmental Temperature	T <sub>opg</sub>	-30 ~ +85	°C
Preserved Environmental Temperature	T <sub>stg</sub>	-30 ~ +85	°C

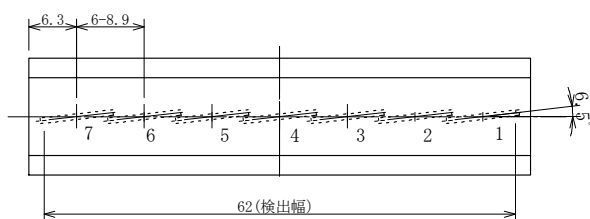
### Electrical Property (Ta=25C)

Item	Symbol	Condition	min.	Typ.	Max.	Unit
Output voltage	V <sub>OUT(1-4)</sub>	V <sub>a</sub> =5V <sup>*1</sup>	0.16		0.42	mVrms
Resistance balance	V <sub>B</sub>	I=1mA <sup>*2</sup>			2	
Input resistance	R	I=1mA	180		700	Ω
Voltage Noise	V <sub>NW</sub>	V <sub>a</sub> =5V			50	μV <sub>P-P</sub>
Piezo Noise	V <sub>NP</sub>	V <sub>a</sub> =5V,press=10g			300	μV <sub>P-P</sub>
Magnetic Flux Density	B			0.1 (S Pole)		T
Detection Width	W	9mm×7ch		62		mm

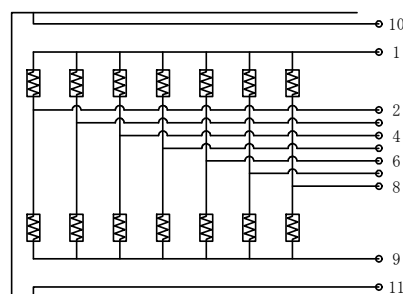
\*1 Input uses the magnetic flux which occurs when it is charged with current of 50Hz, 100mA(rms) in the line of φ 0.1mm.

\*2 max(V<sub>OUT(1-7)</sub>)/min(V<sub>OUT(1-7)</sub>)

### Elements arrangement figure

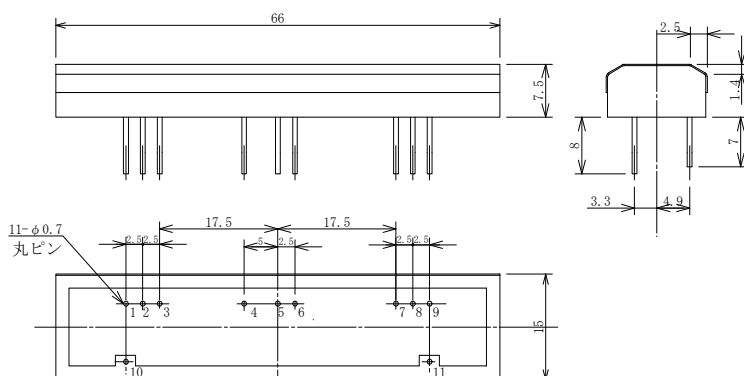


### Internal Circuit Figure



Pin No.	Symbol	Function
1	V <sub>a</sub>	Power Input
9	GND	GND
2 / 3 / 4 / 5 / 6 / 7 / 8	V <sub>OUTS-n</sub>	Output
10 / 11	FG	CGND

### Contour Measure Figure



# The product specifications and the appearance are possibility of changing without notice.